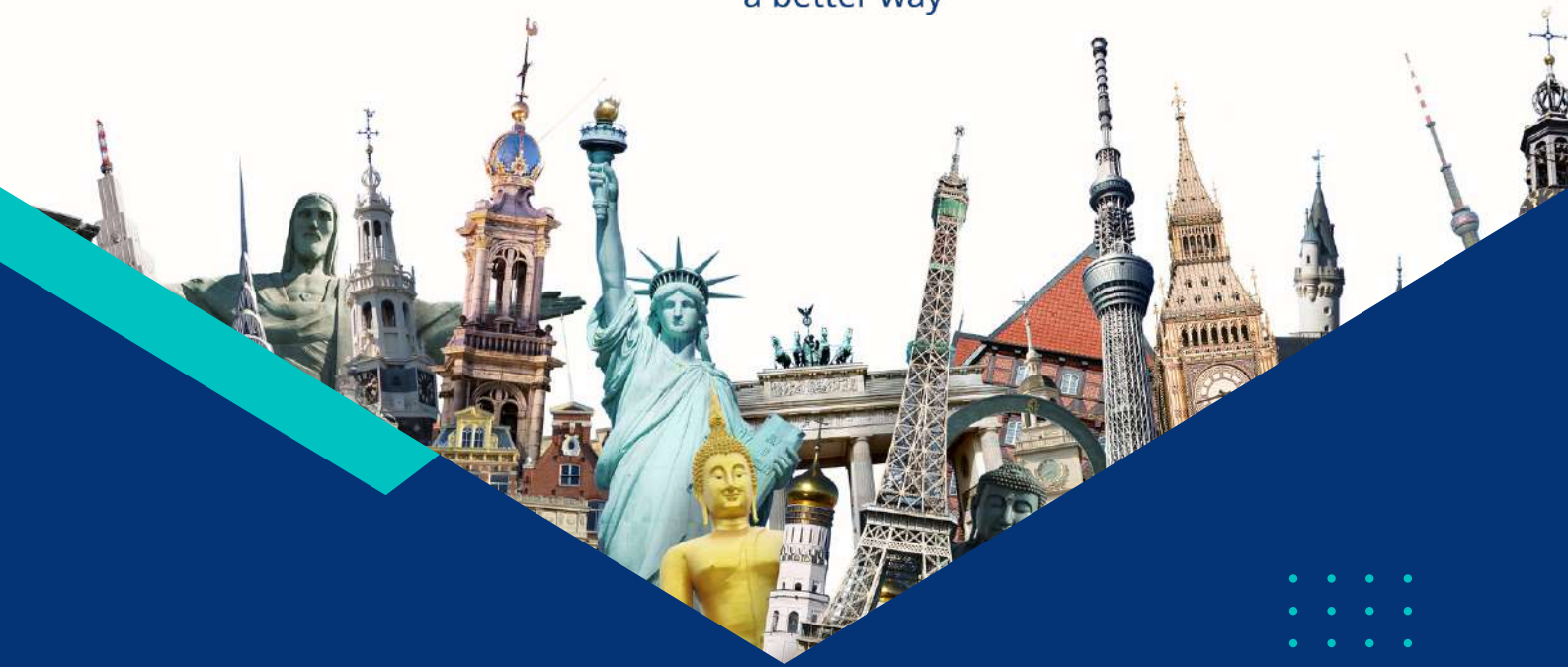


Sriggle®
a better way™



Signature 
by Sriggle

TRAVEL INDUSTRY SOFTWARE

FOR TOUR OPERATORS, DESTINATION MANAGEMENT COMPANY & OTA

BACK OFFICE SOLUTION | B2B / B2C / B2B2C PORTALS
API IN & OUT | TICKETING | CRUISES | CRM, CMS, CDN ALL AT ONE PLACE

Microsoft
Partner



partner
network

Technology



www.sriggle.com



SIGNATURE INTRODUCTION

Signature is a robust end to end platform for Travel & Tourism world developed by industry experts. Backed by state-of-the-art technology with artificial intelligence which reduces turnaround time and enhances business efficiency. It has been carefully crafted to cater to diversified business needs. The screens are user friendly with easy navigation. It supports all the major browsers and devices. The application has been segregated into modules with each module depicting the function of a specific division in a travel company like, Tariff, Operations, Finance Team. Every process is backed by a maker and checker approach to ensure accurate data goes into the system. Detailed information of every action is captured as part of audit trail. Signature facilitates managing the suppliers, clients, creating and managing quotations, bookings, doing financial transactions etc

By utilizing Signature's cloud implementation, you can mitigate your risks. You can conduct a proof-of-concept implementation of Signature on a limited scale within your organization before deciding to expand.

The travel industry is perpetually evolving. The cloud implementation of Signature is consistently updated in response to the priorities of our users. Signature is prepared to assist your company in overcoming any obstacles that the future may present.



WHY SIGNATURE ?

Signature is the flagship product which has End-to-End back office management capability with integrated Finance and CRM modules

QUOTE TO BOOK

Utilizing Artificial Intelligence (AI) to facilitate the quotation and operation of FITs and groups



DIY PACKAGING

Creating custom holiday packages with a variety of price factors to increase revenue.



DIGITAL ITINERARY

Dynamic mini-site with HD Images, Maps and Videos for each itinerary for a client to access over mobile app as well as computer.



INTELLIGENTLY SIMPLE

Intuitive capabilities reduce repetitive duties, thereby increasing user productivity.

STAY COMPETITIVE

Static and dynamic rates with inventory that is always available, Pre Integrated with Bed Banks, Channel Manager, and Direct Hotel Chains



INDUSTRIES SIGNATURE SERVES

Signature **DMC**

- Contract Management
- Quote to Book
- APP for Driver & Guides
- Voice enabled B2B
- Managing promotions

Signature **Tour Operator**

- AI enabled B2C
- Pricing Flexibility
- Easy Checkout
- Integrated Social Media
- Flexible packaging

Signature **OTA**

- Contract Management
- Quote to Book
- APP for Driver & Guides
- Voice enabled B2B
- Managing promotions

Signature **MICE**

- Manage registration
- Dynamically Create event website
- Pre tour management
- Workflow based task assignment
- Post tour Management

Signature **CMS**

- Ultra fast serving
- Media on CDN which distributes contents from 31 servers
- Workflow and Publishing Controls
- Built-in SEO Tools
- ML enabled translation in 31 Languages

Signature **CRM**

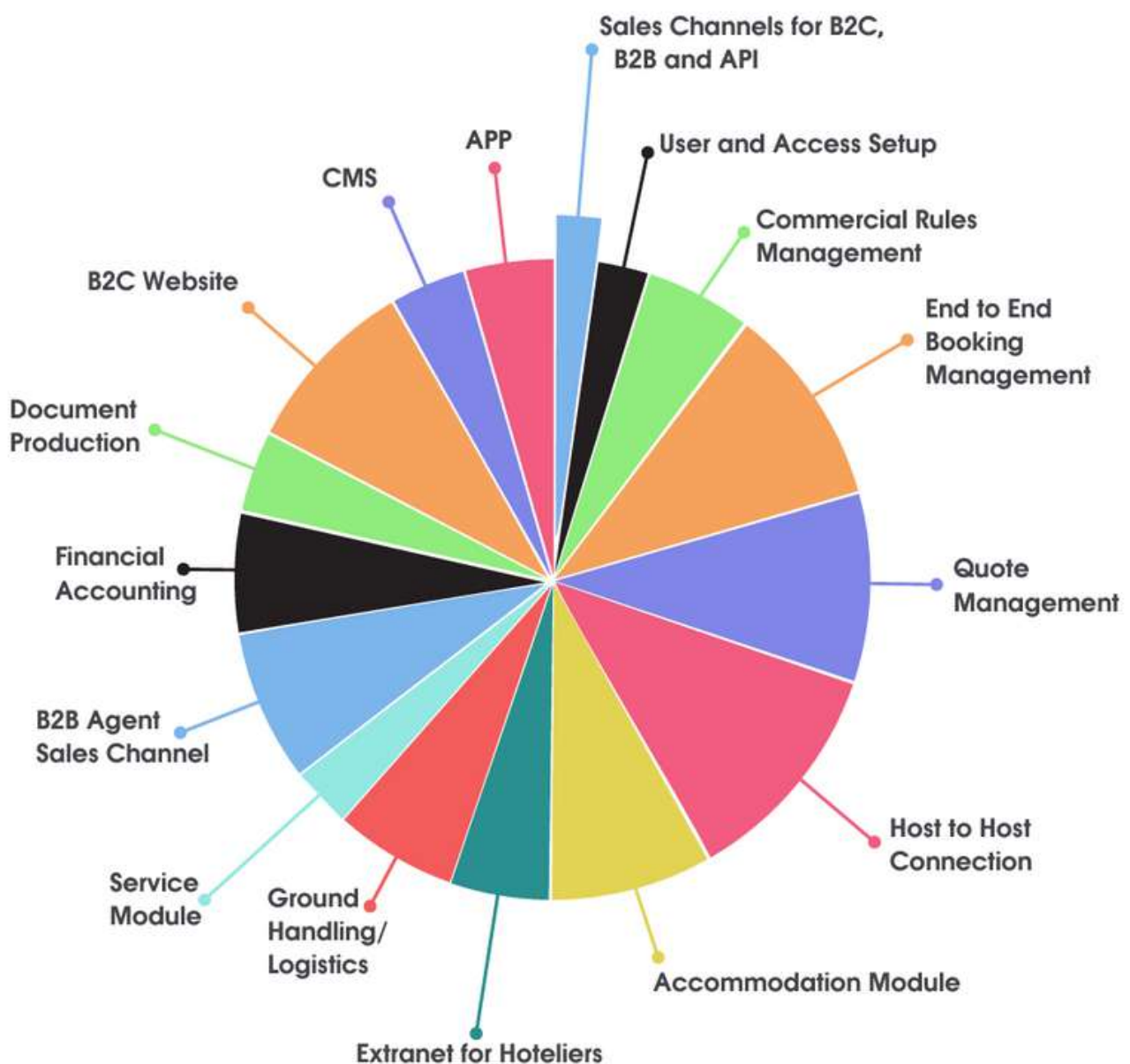
- Increase customer interaction
- Meeting minutes management
- Customer performance dashboard
- Sales funnel with drill downs
- Tasks, To-dos and follow ups





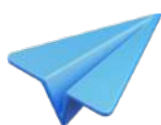
300+

CONFIGURABLE FEATURES





SIGNATURE PACKAGES



Lite Plan

Fully Functional Back office with Accounting module.



Professional

Back office plus, B2B portal and APP for iOS and Android with white labeling, pre-integrated APIs for hotels, activities, transfers, air travel, cruises, and payment gateways.



Enterprise

All of the above plus B2C portal APP for end users to download vouchers and tickets, purchase additional products while on the go, API ready for market distribution, and APP for service providers to track vehicles, guides, and tour leaders in real time.



SOFTWARE FEATURES

		 Lite	 Professional	 Enterprise
	Access Control with Roles & Responsibilities	✓	✓	✓
	Contract Management with Upload	✓	✓	✓
	Inventory Management	✓	✓	✓
	Quotation Management & Versioning	✓	✓	✓
	Reservation Management	✓	✓	✓
	Customizable Packaging	✓	✓	✓
	Seat in Coach Operation	✓	✓	✓
	Integration with Bed Bank (s)	✓	✓	✓
	Dynamic Documentation	✓	✓	✓
	Accountancy with Forex management	✓	✓	✓
	Business Analytics, MIS & Dashboard	✓	✓	✓
	CRM	✓	✓	✓
	Events/MICE	✓	✓	✓
	Artificial Intelligence	✗	✓	✓
	SigniA - Agents portal - B2B	✗	✓	✓
	SigniP - Supplier Extranet - B2S	✗	✗	✓
	SigniX - API Connect - XML (Push & Pull)	✗	✗	✓
	Mobile App	✗	✗	✓



MOST LOVED FEATURES

A list of Signature's primary features, but it offers much more than these.

ENQUIRY MANAGEMENT

- Creation
- Capturing from other sources
- Assignment



QUOTATION MANAGEMENT

Multiple Pax Range, Versioning, Follow up, Markup, Quote through Suggestion(AI), Quote Through Template, Quote Through Previous Quote, Optional against each component inside quote, Create Quote by room or Pax, Copy quote

BOOKING MANAGEMENT

Private Booking (FIT), Group Booking, Multiple Supplier Communication medium, Supplier confirmation - Through hyperlink, Supplier Confirmation - Email, Status management, Pax Management, Rooming List



OPERATION MANAGEMENT

Bulk Confirmation Update, Bulk Price Update, Bulk Driver / Vehicle Assignment, Bulk Guide and Other resources assignment, SIC Operation Management, Shuttling resource assignment, Bulk Closing / Opening Booking, Tour Allowance Management



ACCOUNT RECEIVABLE



Invoice, Credit Note, Receipt, Advance, Adjustment of Advance, Re-Adjustment of allocated Receipt, Bulk Invoice Creation, Auto Invoice Creation (Client wise configuration), Advance / Access Payment Refund Process, Ledger Statement, Ageing, Outstanding Statement, Invoice Upload, Credit Note Upload, Receipt Upload, Bulk Printing of Document (IN/CN/RCT), Forex Revaluation, Monthly Closing

ACCOUNTS PAYABLE

Invoice, Debit Note, Payment, Advance, Adjustment of Advance, Re-Adjustment of allocated Payment, Bulk Invoice Creation, Auto Invoice Creation based on AR Invoice, Advance / Access Payment Refund Process, Ledger Statement, Ageing, Outstanding Statement, Invoice Upload, Credit Note Upload, Receipt Upload, Bulk Payment pay to all / required supplier payment in one go, Forex Revaluation, Monthly Closing Process





GENERAL ACCOUNTING

Defining All GL Accounts(Charter of Account), COA - Posting restrict, Journal Voucher, Payment Voucher, Receipt Voucher, Contra Voucher, Upload Any Journal Entries, Scheduling Any Journal Entries, Year End Closing Process, Monthly Closing Process, Forex Revaluation For banks etc

PROMOTION MANAGEMENT

Early bird book by date, Early bird book by day, Stay Pay, Meal Upgrade, Service Upgrade, FOC Management, Transfer Free, Value Added Promos, Manage Close out of Any Promotions



CLIENT MANAGEMENT

Profiling, Default Templating, Default City / Hotel, Credit Limit, Multiple Currency Assignment, Credit Allowance

CONTRACT MANAGEMENT

General Contract, Special Condition Contract, Multiple Child Policy, Commission Structure, Supplement Management, Digitized Cancellation Policy, Check in Checkout restriction, MLOS Management, Split Contract, Bulk Copy Contract, Bulk Update Contract, Bulk Deactivate Contract, Bulk Extend Contract



FOREX MANAGEMENT

- Multiple Currency System
- Forex Definition
- Multiple Exchange rate between Same currency pair for hedging

APPROVAL MANGEMENT

- Credit Approval
- Cost Approval
- Advance Approval
- Journal Approval





SUPPLIER MANAGEMENT

- Profiling
- Service Alert Management
- Product Management

ALLOTMENT

- Hotel Allotment (Free Sell / Fixed)
- Other Services (Pax Wise Allotment)
- Pre purchase inventory management
- Manage Block Out / Sold Out



& MUCH MORE...

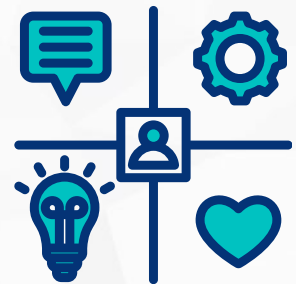




Platform for Agents is an ideal integration of intelligence and business. Real-time online access to rates, bookings, confirmations, and cancellations is made available to business partners via technology, thereby decreasing turnaround time.

PERSONALIZED PACKAGING

- Do-it-yourself packages facilitate the distribution of precustomized packages to specific markets.
- Pricing options with multiple tiers to satisfy the demands of all markets.
- Integrated digital itinerary with HD content accessible via mobile application.



WHITE LABELLING

- enables your FTO / Tour Operator to rapidly rebrand the entire website.
- Multiple currency and language options facilitate communication with your clients.
- B2B2C facilitates additional white labeling and sub-agent/ retailer access.

BOOKING CART

- Permit partners to reach a unified business conclusion through comparison at the concluding phase.
- A pre-integrated payments gateway and credit control aid in the management of financial exposures.
- Provides the capability to include additional passengers and services in a single reservation.



ADMIN DASHBOARD

- The built-in Dashboard(s) provides extensive information regarding the organization.
- Online management of reservations, cancellations, and the printing of vouchers by agents reduces turnaround time.
- Tailored business reports to meet the specific requirements of your organization.

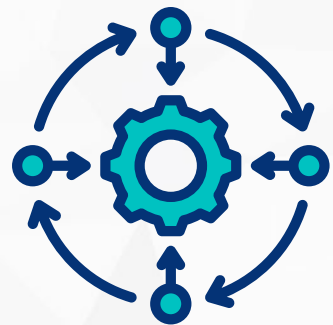


INTELLIGENCE

- Artificial intelligence (AI) capabilities that increase profitability and productivity.
- Additionally, a customized tariff document in XML, Excel, or PDF permits auto-generation and scheduling. Profiling
- Agents facilitates targeted marketing.

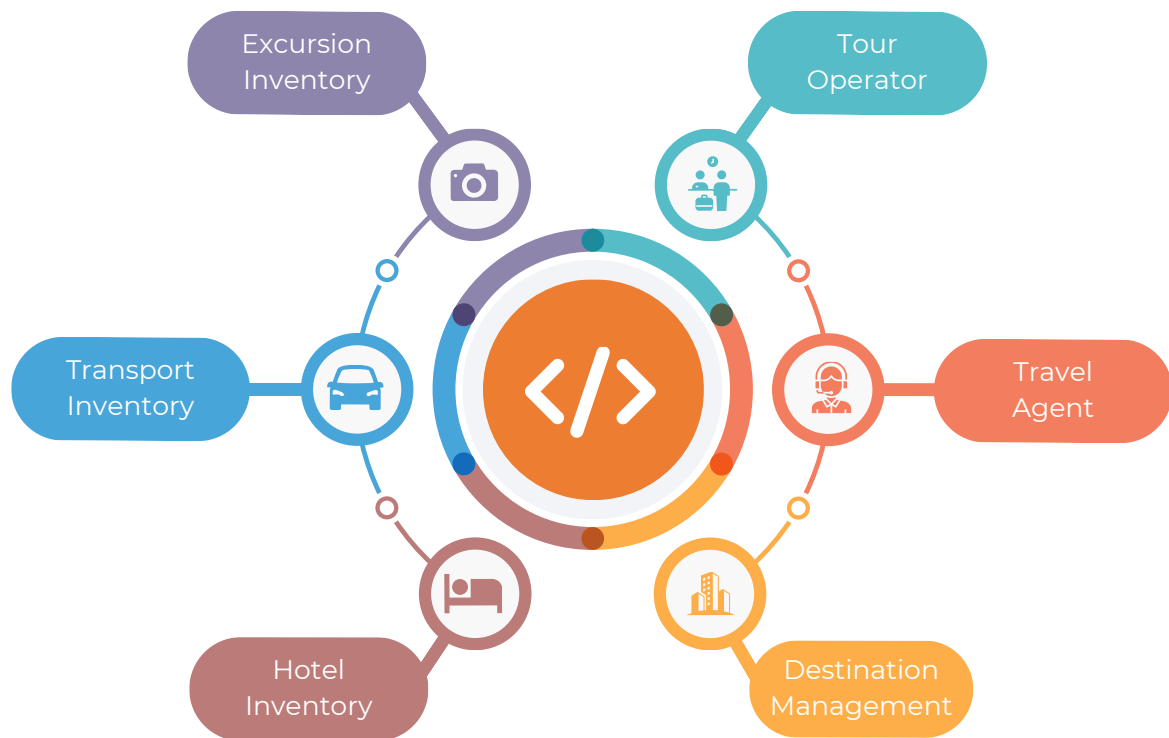
INTEGRATION

- Pre-integrated with Bed banks, major hotel chains, channel managers, airlines with NDC, cruise lines, payment gateways, and insurance providers.
- Pull and push web services are utilized to facilitate electronic data interchange (EDI).
- Optimal velocity of execution when integrating with our preestablished API





API connect allows you to source as well as distribute services. Ready-made integration with major bed banks, ticketing agencies, Tariff on XML/JSON/Excel. Book, modify, cancel all in real-time.



- Pre-integrated with bed banks
- Multiple and combinable promotions
- Client-specific inventory
- Client-specific pricing Client-specific tariff sheet (Excel. XML or JSON)

- Supplementary Information
- Support pricing rules
- Cancel booking
- Content delivery network (CDN)
- closest to clients location

- Always reliable inventory
- Lightning fast results comparable with industry
- Range of filters for search
- Inventory check



Partner extranet integrated with reverse auction and bidding. Partners can confirm booking, top-up inventory, check payment status and much more...

REVERSE AUCTION

Maximise revenue by inviting multiple partners together in a bid, bulk request to multiple partners. etc.



CONTRACT & INVENTORY MANAGEMENT

Partners can punch or upload contracts, promotions, top-up allotment, update block-out dates etc.

MEDIA & CONTENT MANAGEMENT

Update amenities. pictures. videos, health & safety compliances and fact-sheet

ACCOUNTING

Enable partners to punch and upload invoices, check payment status, download remittance and generate various MIS

BOOKING MANAGEMENT

Allows partners to confirm pending bookings, update confirmation number. send notifications to partners for pending bookings etc.

DASHBOARD

- Financial charts
- Inventory utilization
- Booking portfolio

INVENTORY

- Real time inventory
- Top-up allotments
- Manage block-out days

ONLINE CONTRACTING

- Manage contracts
- Manage promotions
- Manage Policies

RESERVATIONS

- Manage confirmation
- Cancellation management
- Notifications and alerts

EFFICIENCY

- Reduce turnaround time
- Increase profitability
- Reduce risk of over priced



MOBILE APPS

ANDROID AND IOS

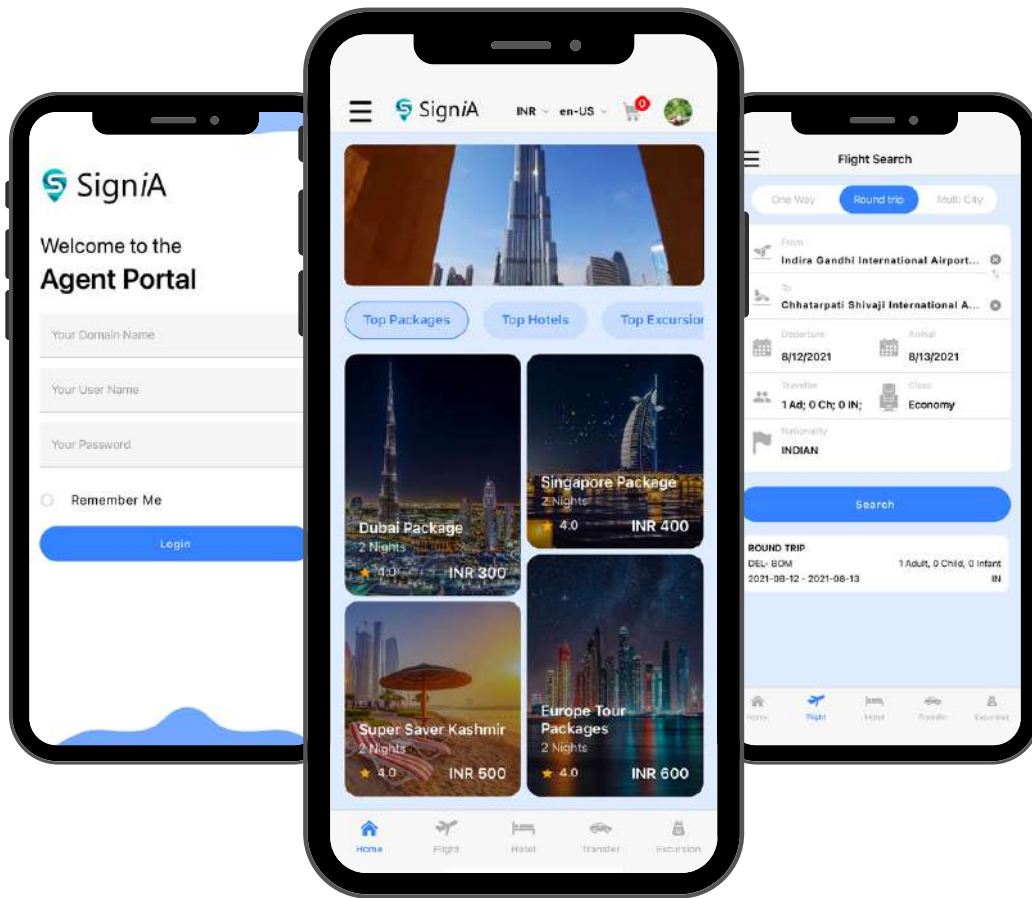


AUTHENTICATOR

Organizations are confronted with a growing inundation of cyber assaults. Sriggle empowers its clientele to safeguard their data in an impregnable fashion. We are employing various measures to safeguard your data. The Authenticator APP, which Sriggle offers at no cost, will empower the organization to implement two-factor authentication for all licensed users.

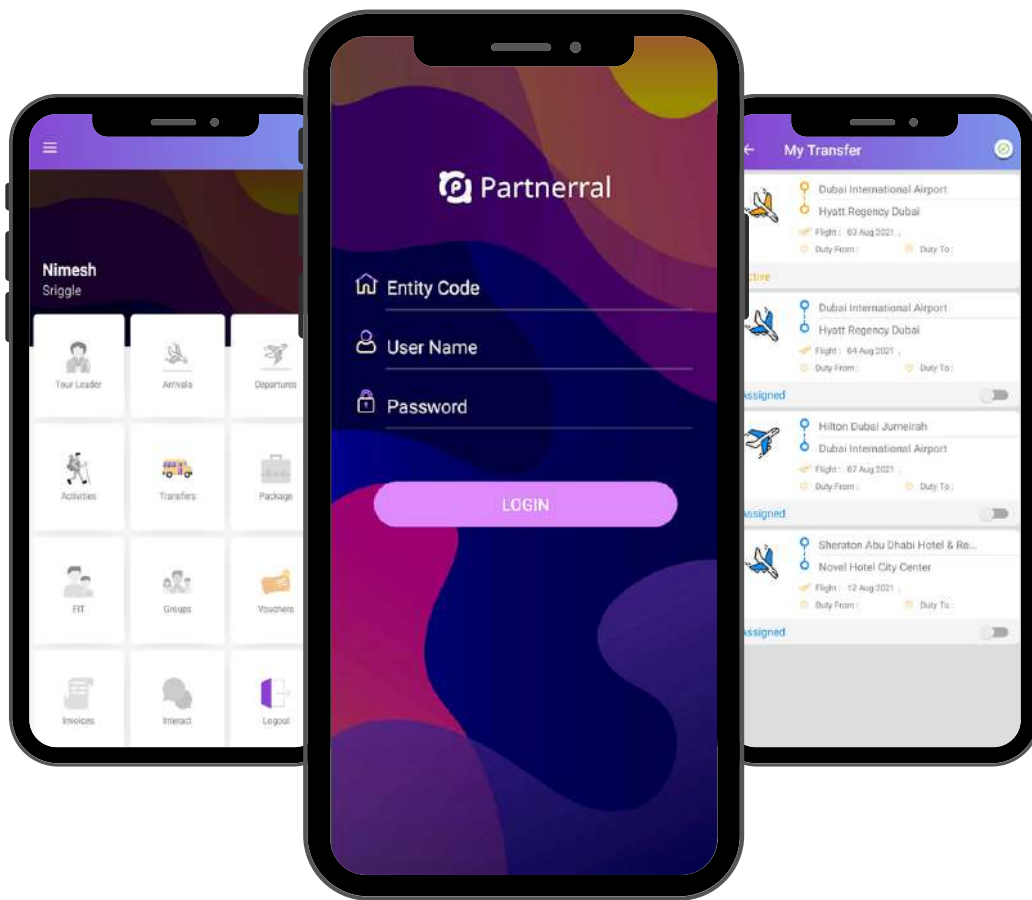
Sriggle is one of the limited number of travel technology companies that has integrated two-factor authentication using its proprietary IOS and Android based APP.





SigniA an award winning B2B Platform for tour operators and OTAs. We are ecstatic to announce the availability of SigniA as an APP on all types of devices. With the advent of the SigniA APP, it is now possible for both consumers and agents to reserve any service using their mobile devices. SigniA APP includes every feature that is accessible through the SigniA Web Application, such as Dynamic White Labeling, Search to Book, Itinerary to Operate, Invoice to Pay, and many other features.



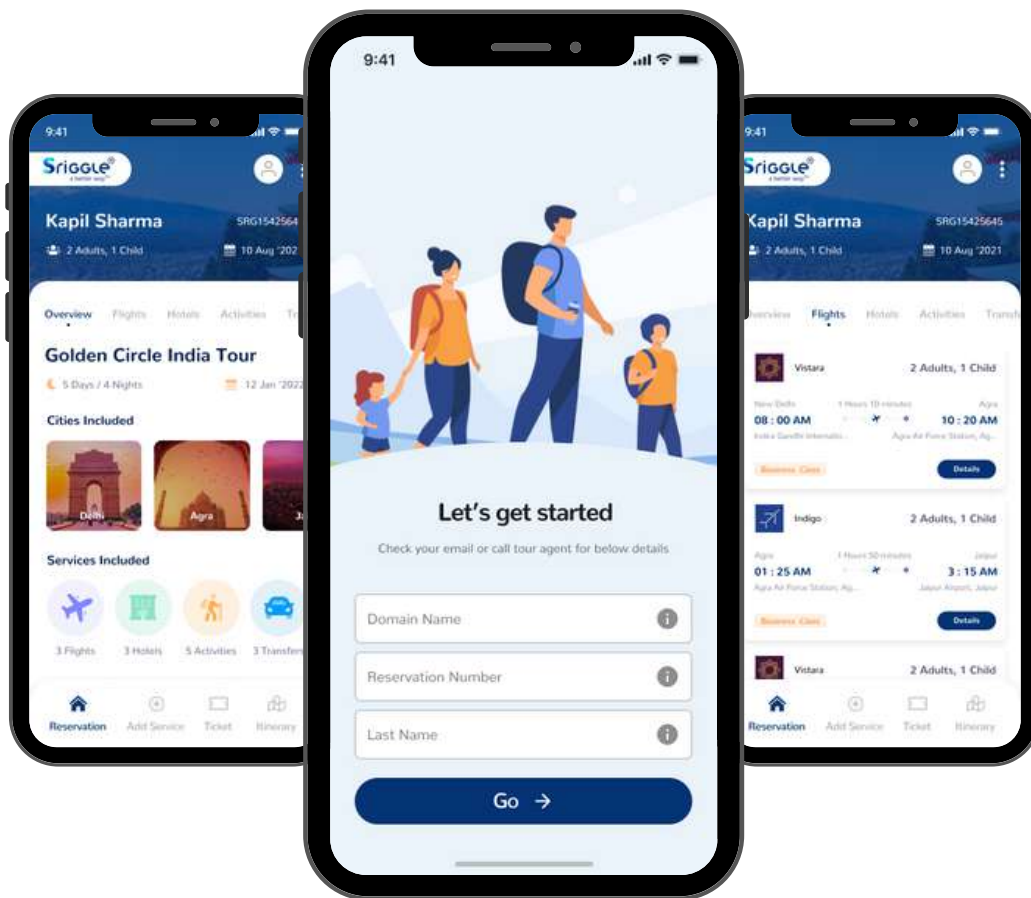


Partners who supply travel companies with services. The Partnerral APP enables all service providers (Transporter, Guide, Restaurant, etc.) to be notified via alerts whenever a service is reserved in their name. Upon approving the service request, the travel company receives immediate confirmation.

This APP has many such features which bridges the traditional gap between the service provider, Travel company and the end consumer.

The idea behind Partnerral is to streamline the operation, reduce cost, and increase revenue by providing a better way of managing reservations.





Discover and plan your perfect day of travel with Touristant - the ultimate travel companion app. Explore attractions, create personalized itineraries, get real-time updates, navigate easily, and find the best local spots for a memorable experience. Say goodbye to guidebooks and hello to a seamless and immersive journey with Touristant. Download now and make every day extraordinary!

With Touristant, your travel experience is taken to the next level. The app intelligently suggests off-the-beaten-path locations, hidden gems, and unique experiences that you won't find in traditional travel guides. Immerse yourself in the local culture, uncover secret spots, and create unforgettable memories. Whether you're an adventure seeker, history buff, or food lover, Touristant has something special in store for you. Let Touristant be your trusted companion and unlock the true essence of every destination you visit.



VALUE ADDED SERVICES & PERSONALIZATION



TRAINING

Onsite as well as Online Training of each user.



INTEGRATION

Any additional Integration based on your need



MASTER DATA MIGRATION

We can migrate all of your data from legacy systems to Signature, including transactions.



CUSTOMIZATION

Business process mapping and personalization

API INTEGRATIONS

- 2Factor API
- Apple Holidays API
- AtThe Top API
- AVIS API
- AxisRooms API
- Bokun API
- Car API
- CC Avenue API
- Cleartrip API
- Cruise API
- Cybersource API
- DOTW API
- Expedia API
- Flight API
- Globaltix API
- GRN Connect API
- GTA API
- Hotel API
- HotelBeds API
- Hotelspro API
- Hyperguest API
- Jumeirah API
- Marhaba API
- Musement API
- Nets Easy Shop API
- Numverify API
- Payza API
- Quickpay API
- Raileurope API
- Rayna Tours API
- Razorpay API
- RIU API
- Sabre API
- Salesforce API
- Sasti ticket API
- Save a train API
- Sixt API
- Smyrooms Hotel API
- Stripe API
- Stuba API
- Ticketing
- TBO API
- TravelClick API
- Travelgate API
- Travelguru API
- Travelport API
- Travia API
- Tripadvisor API
- Viator API
- Webbeds API
- Wetu API
- Yatra API
- YieldPlanet API
- Zumata API

(CDN) CONTENT DELIVERY NETWORK

CDN helps deliver web content, including images, videos, and other media, to end-users with high availability and performance. It works by caching content on a distributed network of servers, reducing the distance between the user and the content they are accessing, resulting in faster page load times and a better user experience.



GET 24/7 CUSTOMER SUPPORT

Anywhere in the world, there's 24/7 support.
Travel agency software with unparalleled customer support.
Get immediate response on the fly in 10 minute go.





CONTACT INFORMATION

We would love to get in touch with you.

EMAIL

contact@sriggle.com

PHONE

[+91 129 4444 777](tel:+911294444777)

WEBSITE

www.sriggle.com

ADDRESS

504, SSR Corporate Park, Opposite NHPC Metro Station, Mathura Road, Faridabad, India 121003

