



Signature 
by Sruggle

TOUR OPERATOR & TRAVEL INDUSTRY SOFTWARE

BACK OFFICE SOLUTION | B2B & B2C PORTALS
API TO 3RD PARTIES | TICKETING AND MUCH MORE

Microsoft
Partner



partner
network

Technology



www.sruggle.com



SIGNATURE INTRODUCTION

Signature is a Travel Technology Platform to help all kinds of Travel Companies. Signature users are empowered to configure its capabilities to suit the way they work. With an unrivalled functional scope, Signature's modular architecture ensures users work more efficiently, eliminating manual procedures and complexity: a simplified IT landscape and reduced costs. As a result, with Signature, you will have higher quality and more complete data to drive insights and decision-making right across your business.

Signature's cloud implementation enables you to reduce your risks. With a proof of concept implementation, you can trial Signature at small scale within your business, and then scale up.

The travel business never stops changing. Signature's cloud implementation is continually being refreshed, driven by our user's priorities. Signature is ready to help your business succeed whatever challenges the future may bring.



WHY SIGNATURE ?

Signature is the flagship product which has End-to-End back office management capability with integrated Finance and CRM modules

QUOTE TO BOOK

End-to-end workflow enabled with Artificial Intelligence (AI) to Quote and Operate Groups as well as FITs



DIY PACKAGING

Self made holiday packages to augment revenue, with multi-tiered price points to choose from



DIGITAL ITINERARY

Dynamic mini-site with HD Images, Maps and Videos for each itinerary for a client to access over mobile app as well as computer.



INTELLIGENTLY SIMPLE

Monotonous tasks are reduced by built-in intelligence, which enhances users productivity

STAY COMPETITIVE

Static and dynamic rates with always available inventory Built-in integration with GTA Hotels Pro, Hotel Beds and Derbysoft



Sriggle[®]
a better way[™]

www.sriggle.com

INDUSTRIES SIGNATURE SERVES

Signature **DMC**

- Contract Management
- Quote to Book
- APP for Driver & Guides
- Voice enabled B2B
- Managing promotions

Signature **Tour Operator**

- AI enabled B2C
- Pricing Flexibility
- Easy Checkout
- Integrated Social Media
- Flexible packaging

Signature **OTA**

- Contract Management
- Quote to Book
- APP for Driver & Guides
- Voice enabled B2B
- Managing promotions

Signature **MICE**

- Manage registration
- Dynamically Create event website
- Pre tour management
- Workflow based task assignment
- Post tour Management

Signature **CMS**

- Ultra fast serving
- Media on CDN which distributes contents from 31 servers
- Workflow and Publishing Controls
- Built-in SEO Tools
- ML enabled translation in 31 Languages

Signature **CRM**

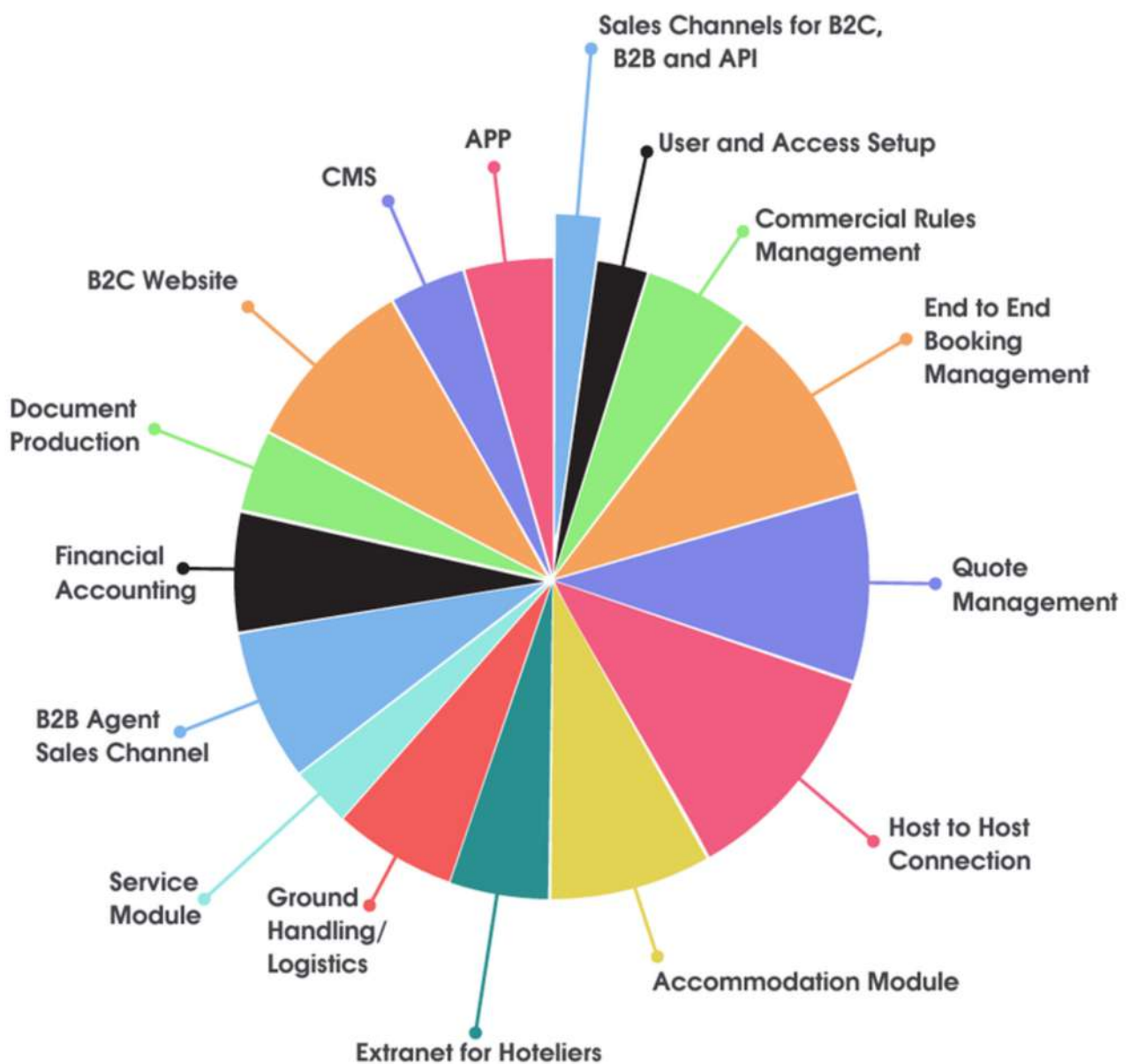
- Increase customer interaction
- Meeting minutes management
- Customer performance dashboard
- Sales funnel with drill downs
- Tasks, To-dos and follow ups





300+

CONFIGURABLE FEATURES





SIGNATURE PACKAGES



Lite Plan

Back office only



Professional

Back office plus Quotations, Itineraries, AI (recommendation to users of popular services / destinations) & includes B2B portal and SigniA App



Enterprise

All of the above plus Supplier Extranet, Cruise Module, Mobile APPs and API (push and Pull). Build your own B2C website using our API



SOFTWARE FEATURES

		 Lite	 Professional	 Enterprise
	Access Control with Roles & Responsibilities	✓	✓	✓
	Contract Management with Upload	✓	✓	✓
	Inventory Management	✓	✓	✓
	Quotation Management & Versioning	✓	✓	✓
	Reservation Management	✓	✓	✓
	Customizable Packaging	✓	✓	✓
	Seat in Coach Operation	✓	✓	✓
	Dynamic Documentation	✓	✓	✓
	Accountancy with Forex management	✓	✓	✓
	Business Analytics, MIS & Dashboard	✓	✓	✓
	CRM	✓	✓	✓
	SigniA - Agents portal - B2B	✗	✓	✓
	Artificial Intelligence	✗	✓	✓
	SigniX - API In (Integration)	✗	✓	✓
	SigniX - API Out (Distribution)	✗	✗	✓
	Events/MICE	✗	✗	✓
	SigniP - Supplier Extranet - B2S	✗	✗	✓
	Mobile App	✗	✗	✓
	Cruise Module	✗	✗	✓



MOST LOVED FEATURES

A list of Signature's primary features, but it offers much more than these.

ENQUIRY MANAGEMENT

- Creation
- Capturing from other sources
- Assignment



QUOTATION MANAGEMENT

Multiple Pax Range, Versioning, Follow up, Markup, Quote through Suggestion(AI), Quote Through Template, Quote Through Previous Quote, Optional against each component inside quote, Create Quote by room or Pax, Copy quote

BOOKING MANAGEMENT

Private Booking (FIT), Group Booking, Multiple Supplier Communication medium, Supplier confirmation - Through hyperlink, Supplier Confirmation - Email, Status management, Pax Management, Rooming List



OPERATION MANAGEMENT

Bulk Confirmation Update, Bulk Price Update, Bulk Driver / Vehicle Assignment, Bulk Guide and Other resources assignment, SIC Operation Management, Shuttling resource assignment, Bulk Closing / Opening Booking, Tour Allowance Management



ACCOUNT RECEIVABLE



Invoice, Credit Note, Receipt, Advance, Adjustment of Advance, Re-Adjustment of allocated Receipt, Bulk Invoice Creation, Auto Invoice Creation(Client wise configuration), Advance / Access Payment Refund Process, Ledger Statement, Ageing, Outstanding Statement, Invoice Upload, Credit Note Upload, Receipt Upload, Bulk Printing of Document (IN/CN/RCT), Forex Revaluation, Monthly Closing

ACCOUNTS PAYABLE

Invoice, Debit Note, Payment, Advance, Adjustment of Advance, Re-Adjustment of allocated Payment, Bulk Invoice Creation, Auto Invoice Creation based on AR Invoice, Advance / Access Payment Refund Process, Ledger Statement, Ageing, Outstanding Statement, Invoice Upload, Credit Note Upload, Receipt Upload, Bulk Payment pay to all / required supplier payment in one go, Forex Revaluation, Monthly Closing Process





GENERAL ACCOUNTING

Defining All GL Accounts(Chart of Account), COA - Posting restrict, Journal Voucher, Payment Voucher, Receipt Voucher, Contra Voucher, Upload Any Journal Entries, Scheduling Any Journal Entries, Year End Closing Process, Monthly Closing Process, Forex Revaluation For banks etc

PROMOTION MANAGEMENT

Early bird book by date, Early bird book by day, Stay Pay, Meal Upgrade, Service Upgrade, FOC Management, Transfer Free, Value Added Promos, Manage Close out of Any Promotions



CLIENT MANAGEMENT

Profiling, Default Templating, Default City / Hotel, Credit Limit, Multiple Currency Assignment, Credit Allowance

CONTRACT MANAGEMENT

General Contract, Special Condition Contract, Multiple Child Policy, Commission Structure, Supplement Management, Digitized Cancellation Policy, Check in Checkout restriction, MLOS Management, Split Contract, Bulk Copy Contract, Bulk Update Contract, Bulk Deactivate Contract, Bulk Extend Contract



FOREX MANAGEMENT

- Multiple Currency System
- Forex Definition
- Multiple Exchange rate between Same currency pair for hedging

APPROVAL MANGEMENT

- Credit Approval
- Cost Approval
- Advance Approval
- Journal Approval





SUPPLIER MANAGEMENT

- Profiling
- Service Alert Management
- Product Management

ALLOTMENT

- Hotel Allotment (Free Sell / Fixed)
- Other Services (Pax Wise Allotment)
- Pre purchase inventory management
- Manage Block Out / Sold Out



& MUCH MORE...





Jumpstart your Cruise Sales today !

Our Integrated Cruiselines

(Through CRUISEHOST)



+40 more



CRUISE API HIGHLIGHTS



Instant fast results

Speed Up Your Travel Planning: Access Instantaneous Results with Our Cutting-Edge Technology. Say Goodbye to Waiting and Hello to Efficiency.



Real-time inventory of all major players

Elevate Your Agency's Offerings and Delight Your Customers with Seamless Access to the Widest Range of Cruise Options. Backed by Reliable Data and Unrivalled Expertise.



Competitive pricing

Unlock Unbeatable Value: Explore Competitive Pricing Tailored to your Preferences. API that Ensures Access to the Best Deals and Special Offers.



600+ detailed ships

From Cabin Layouts to Onboard Amenities, Deep Dive into Each Vessel's Features to Tailor the Perfect Cruise Experience for Your Clients. With Detailed Insights on Every Ship, You Can Ensure Unmatched Personalization and Satisfaction.





This platform for Agents is a perfect blend of business with intelligence. Technology provides business partners online access to rates, bookings, confirmations and cancellations in real time reducing turnaround time.

PERSONALIZED PACKAGING

- DIY packages help in targeted distribution of pre-customized packages to different markets.
- Multi-tiered pricing options to meet expectations of all markets.
- Integrated Digital itinerary with mobile app-enabled HD content.



WHITE LABELLING

- Allows your FTO to rebrand the entire website in no time.
- Choice of Multiple languages and currencies gives ease to your partners.
- B2B2C allows further white labeling and access to sub-agents/retailers.

BOOKING CART

- Enable partners to make a uniform business decision by comparing at final stage.
- Credit control and pre-integrated payments gateway helps in managing financial exposures.
- Allows the flexibility to add multiple passengers and services in the same booking.



ADMIN DASHBOARD

- The inbuilt dashboard gives you comprehensive details about the business.
- Agents can print Vouchers, manage bookings, cancellations etc. online which reduces turnaround time.
- Customized business reports to suits your business needs.



INTELLIGENCE

- Empowered with artificial intelligence (AI) enhancing productivity and profitability.
- Tailored tariff sheet in XML, excel or pdf also allows scheduling and auto-generation.
- Agent profiling helps in targeted marketing.

INTEGRATION

- Major bed banks like GTA, HotelsPro and Hotelbeds are pre integrated.
- Push as well as Pull web services for electronic data interchange (EDI).
- Quickest possible turnaround time in integration with our pre designed API

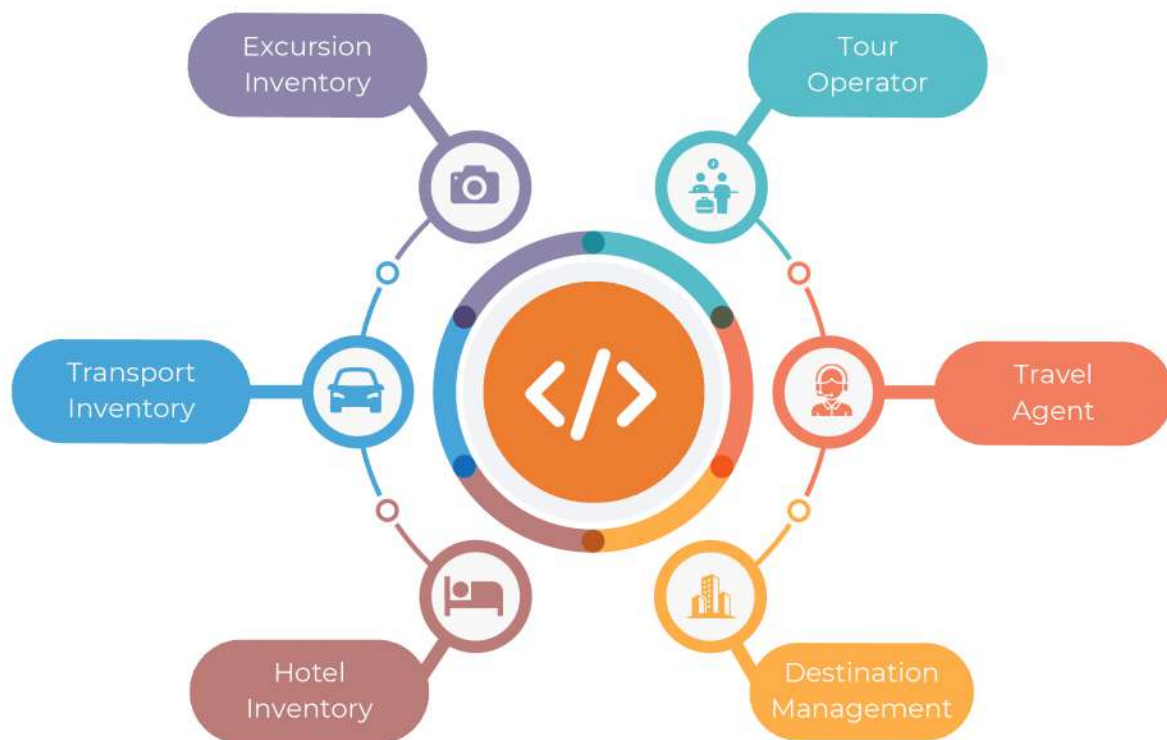


CRUISE MODULE

- Get Instant fast results and say goodbye to waiting.
- Real-time inventory of all major players.
- Get competitive pricing and unlock unbeatable value.
- Get details of 600+ ships and enhance cruise experience with customer satisfaction.



API connect allows you to source as well as distribute services. Ready-made integration with major bed banks, ticketing agencies, Tariff on XML/JSON/Excel. Book, modify, cancel all in real-time.



- Pre-integrated with bed banks
- Multiple and combinable promotions
- Client-specific inventory
- Client-specific pricing Client-specific tariff sheet (Excel, XML or JSON)

- Supplementary Information
- Support pricing rules
- Cancel booking
- Content delivery network (CDN)
- closest to clients location

- Always reliable inventory
- Lightning fast results comparable with industry
- Range of filters for search
- Inventory check



Partner extranet integrated with reverse auction and bidding. Partners can confirm booking, top-up inventory, check payment status and much more...

REVERSE AUCTION

Maximise revenue by inviting multiple partners together in a bid, bulk request to multiple partners. etc.



CONTRACT & INVENTORY MANAGEMENT

Partners can punch or upload contracts, promotions, top-up allotment, update block-out dates etc.

MEDIA & CONTENT MANAGEMENT

Update amenities. pictures. videos, health & safety compliances and fact-sheet

ACCOUNTING

Enable partners to punch and upload invoices, check payment status, download remittance and generate various MIS

BOOKING MANAGEMENT

Allows partners to confirm pending bookings, update confirmation number. send notifications to partners for pending bookings etc.

DASHBOARD

- Financial charts
- Inventory utilization
- Booking portfolio

INVENTORY

- Real time inventory
- Top-up allotments
- Manage block-out days

ONLINE CONTRACTING

- Manage contracts
- Manage promotions
- Manage Policies

RESERVATIONS

- Manage confirmation
- Cancellation management
- Notifications and alerts

EFFICIENCY

- Reduce turnaround time
- Increase profitability
- Reduce risk of over priced

MOBILE APPS

ANDROID AND IOS



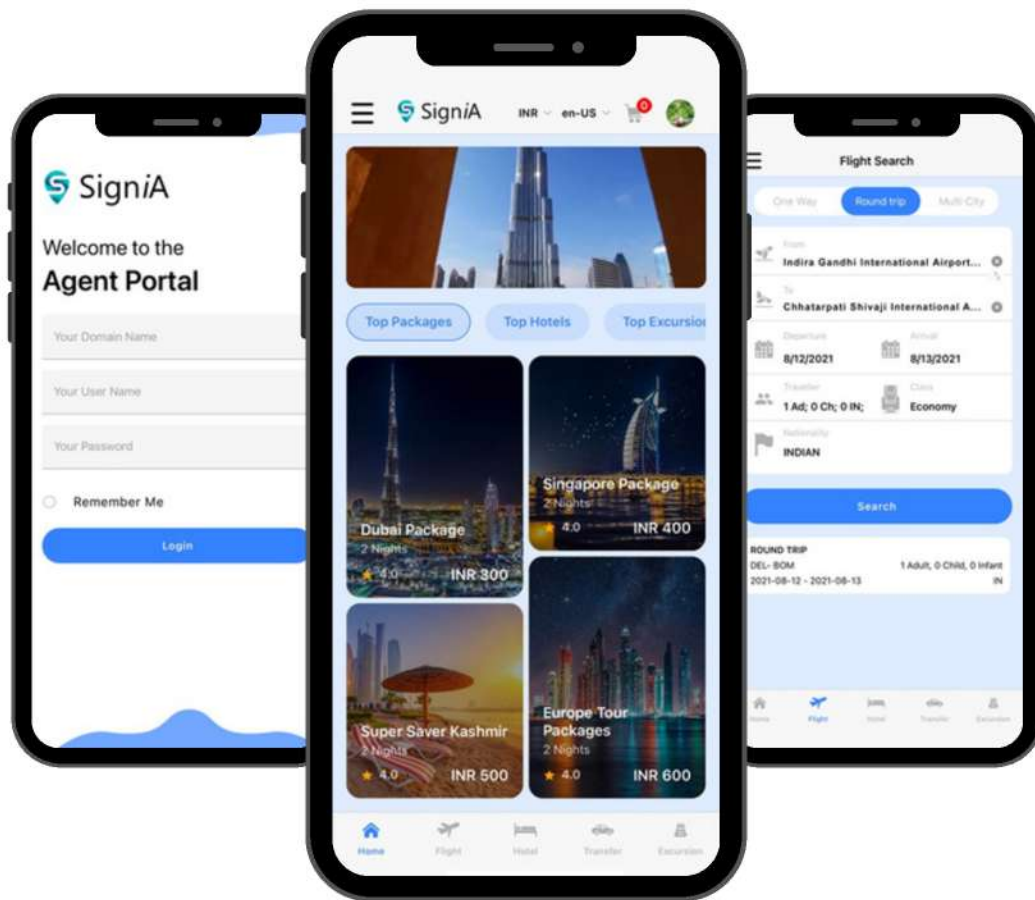
AUTHENTICATOR

Companies are facing an increasing barrage of cyberattacks. Sriggle enables its customers to protect their data in foolproof manner. We are taking a number of steps to ensure your data remains safe. Our Authenticator APP is available free of cost and it will enable Sriggle to provide 2-factor authentication to all licensed users.

When signing in to Sriggle's Web based application, the Authenticator generates a six-digit one-time password which users should enter in addition to their usual login details.

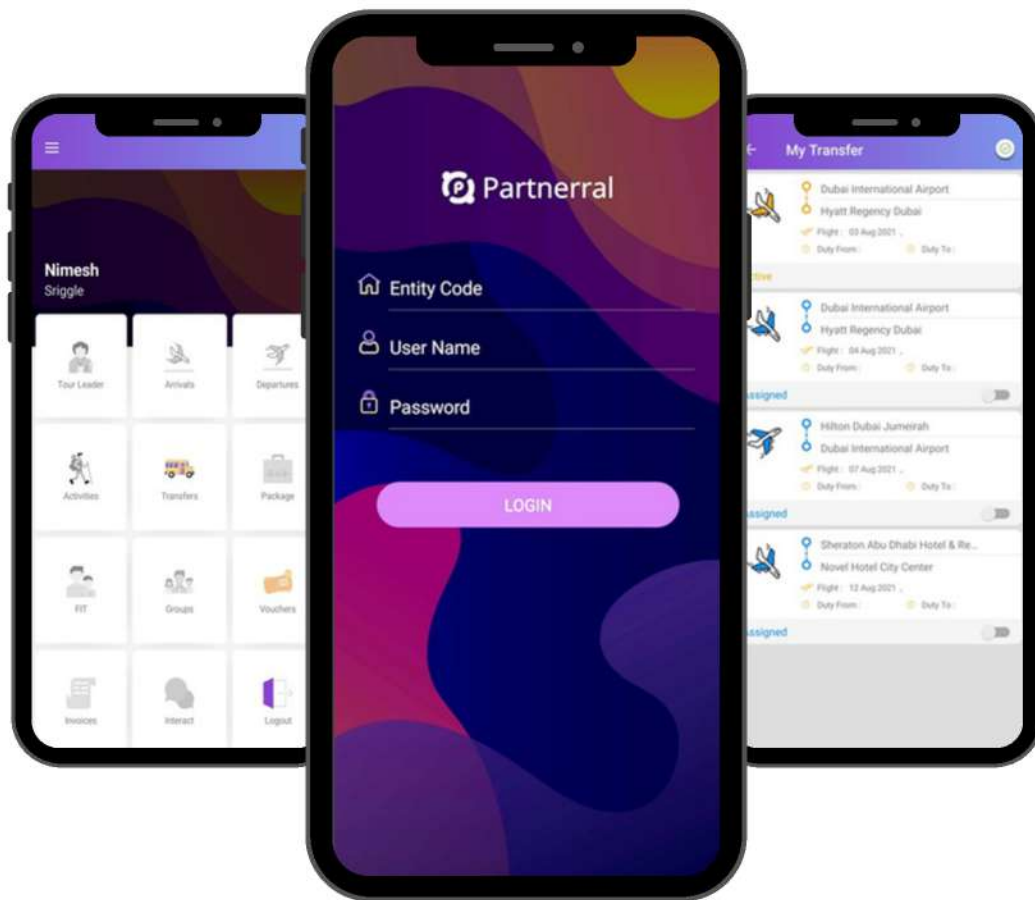
Sriggle is one of the few companies to introduce Two-Factor Authentication in Travel Technology.





SigniA is Sriggle's awarded booking engine for OTA and Tour Operators. We feel proud to launch SigniA as APP which is now available on all kind of devices. Availability of SigniA on APP now enables all clients and Agents to book all services using mobile devices. SigniA APP brings along all the features available on SigniA Web Application, including Dynamic White labelling, Search to Book, Invoice to Pay, Itinerary to Operate and so on.



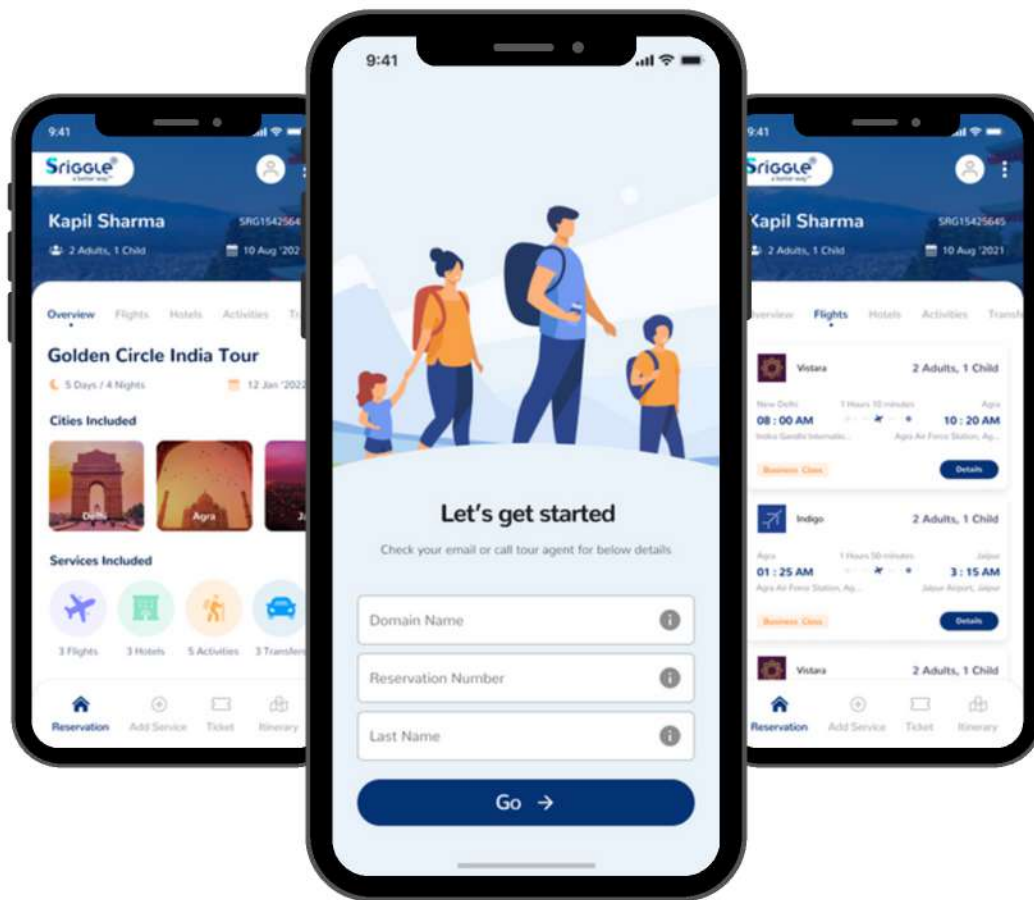


APP is for all Partners who are providing services to Travel Companies. Partnerral APP allows all service providers (Transporter, Guide, Restaurant etc) to receive alerts when any service is booked against them and when accepting such service, the Travel Companies gets instant confirmation.

This APP has many such features which bridges the traditional gap between the service provider, Travel company and the end consumer.

The idea behind Partnerral is to streamline the operation, reduce cost, and increase revenue by providing a better way of managing reservations.





Discover and plan your perfect day of travel with Touristant - the ultimate travel companion app. Explore attractions, create personalized itineraries, get real-time updates, navigate easily, and find the best local spots for a memorable experience. Say goodbye to guidebooks and hello to a seamless and immersive journey with Touristant. Download now and make every day extraordinary!

With Touristant, your travel experience is taken to the next level. The app intelligently suggests off-the-beaten-path locations, hidden gems, and unique experiences that you won't find in traditional travel guides. Immerse yourself in the local culture, uncover secret spots, and create unforgettable memories. Whether you're an adventure seeker, history buff, or food lover, Touristant has something special in store for you. Let Touristant be your trusted companion and unlock the true essence of every destination you visit.



VALUE ADDED SERVICES & PERSONALIZATION



TRAINING

Cost varies based on number of
Training Sessions



INTEGRATION

Integration with SAP / Sourcing
and distribution API



MASTER DATA MIGRATION

All Master data as well as
transactions from XLS or flat file



CUSTOMIZATION

Business process mapping and
personalization



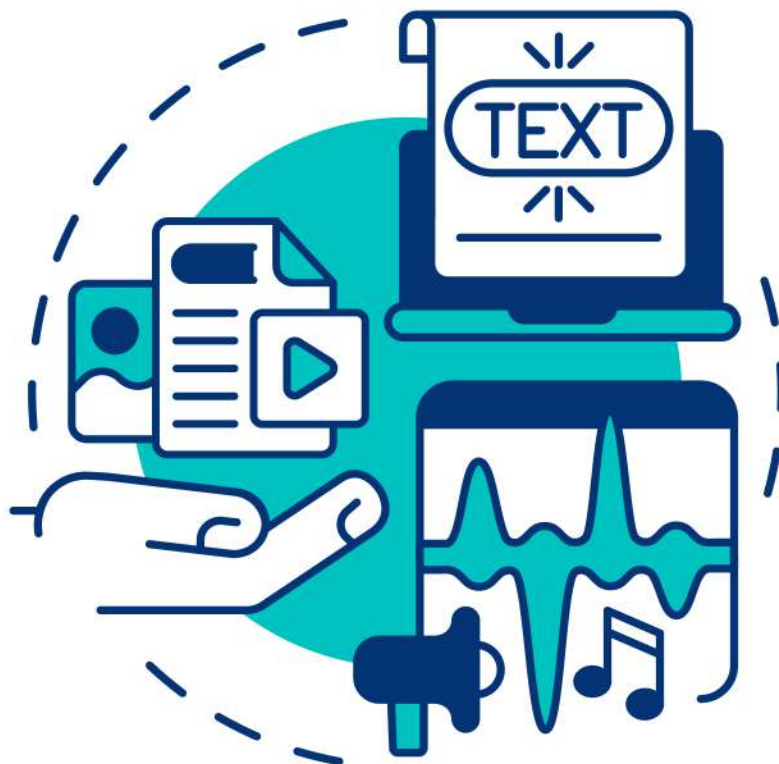
API INTEGRATIONS

- 2Factor API
- Apple Holidays API
- AtThe Top API
- AVIS API
- AxisRooms API
- Bokun API
- CC Avenue API
- Cleartrip API
- Cruise API
- Cybersource API
- DOTW API
- Expedia API
- Globaltix API
- GRN Connect API
- GTA API
- Zumata API
- HotelBeds API
- Hotelspro API
- Hyperguest API
- Jumeirah API
- Marhaba API
- Musement API
- Nets Easy Shop API
- Numverify API
- Quickpay API
- Raileurope API
- Rayna Tours API
- Razorpay API
- RIU API
- Salesforce API
- Sasti ticket API
- Save a train API
- Sixt API
- Smyrooms Hotel API
- Stripe API
- Stuba API
- TBO API
- TravelClick API
- Travelgate API
- Travelguru API
- Travelport API
- Travia API
- Tripadvisor API
- Viator API
- Webbeds API
- Wetu API
- Yatra API
- YieldPlanet API



(CDN) CONTENT DELIVERY NETWORK

CDN helps deliver web content, including images, videos, and other media, to end-users with high availability and performance. It works by caching content on a distributed network of servers, reducing the distance between the user and the content they are accessing, resulting in faster page load times and a better user experience.



GET 24/7 CUSTOMER SUPPORT

Anywhere in the world, there's 24/7 support.
Travel agency software with unparalleled customer support.
Get immediate response on the fly in 10 minute go.





CONTACT INFORMATION

We would love to get in touch with you.

✉ EMAIL

contact@sriggle.com

☎ PHONE

[+91 129 4444 777](tel:+911294444777)

🌐 WEBSITE

www.sriggle.com

📍 ADDRESSES

• • • India

504, SSR Corporate Park,
13/6 Mathura Road,
Faridabad, India 121003

United Arab Emirates

SH-5, AL Hamra,
Al Karama, Dubai,
United Arab Emirates

United Kingdom

128, City Road,
London, EC1V 2NX,
United Kingdom

All logos, and registered trademarks are the property of their respective owners.